



# MONTHLY MEMBERSHIP PROGRESS REPORT

District 324B3

Results as of: 02/28/2018

GMT: N S SANKAR

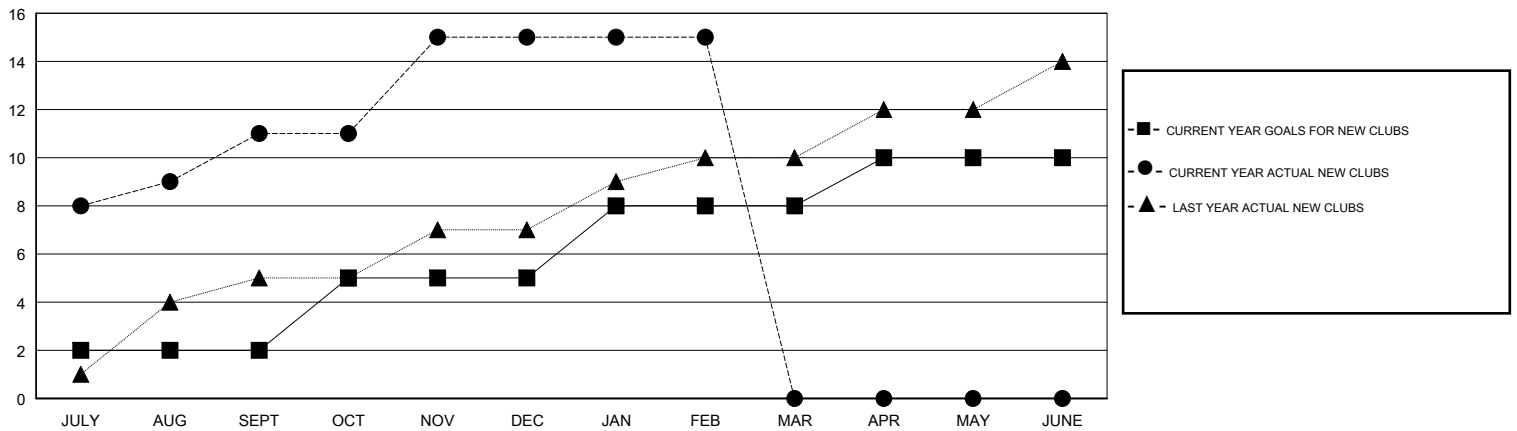
LOCATION INDIA

GMT CA

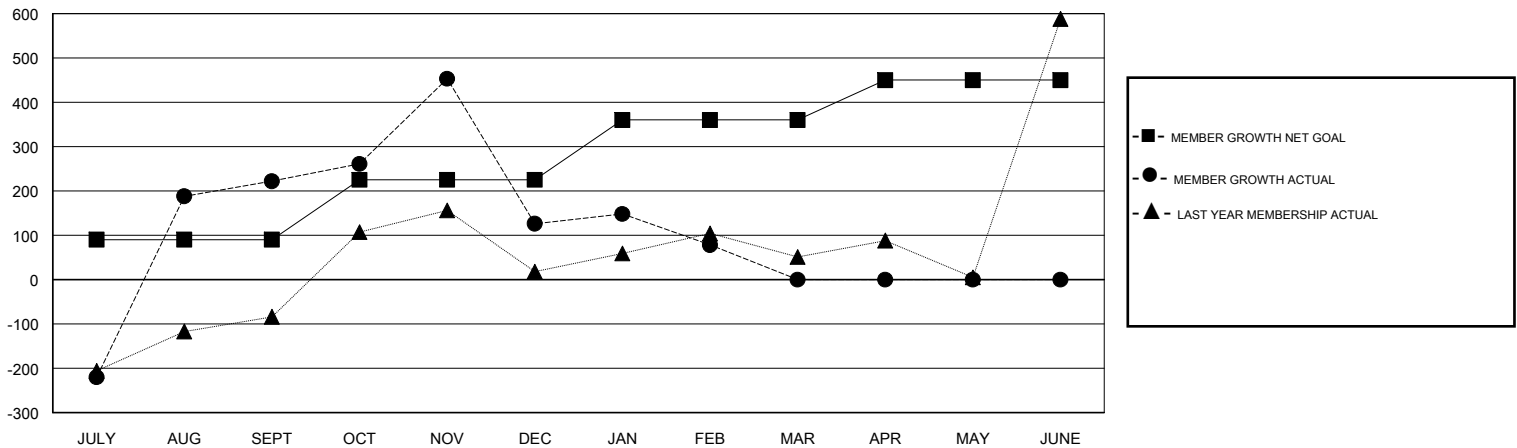
Clubs			
RESULTS FOR 2017-2018			
QUARTER	NEW CLUB GOAL	NEW CLUBS	DROPPED CLUBS
JULY/AUG/SEPT	2	11	0
OCT/NOV/DEC	3	4	9
JAN/FEB/MAR	3	0	2
APR/MAY/JUNE	2	0	0

Members			
RESULTS FOR 2017-2018			
QUARTER	MEMBER GROWTH NET GOAL	MEMBER GROWTH ACTUAL	DROPPED MEMBERS ACTUAL (including transfers)
JULY/AUG/SEPT	90	885	586
OCT/NOV/DEC	135	364	389
JAN/FEB/MAR	135	290	219
APR/MAY/JUNE	90	0	0

GOALS AND ACTUAL NEW CLUBS CUMULATIVE



GOALS AND ACTUAL MEMBERS CUMULATIVE



DROPPED CLUBS: 11

144 CLUBS OF 177 ADDED 1 OR MORE NEW MEMBERS

GENDER DISTRIBUTION

MALE 5,593 (77.00%)  
 FEMALE 1,671 (23.00%)  
 Women Percentage Fiscal Year Goal: 10%

DROPPED MEMBERS

DECEASED	22
CLUB CANCELLED	326
OTHER	846
<b>TOTAL</b>	<b>1,194</b>

[CLICK HERE FOR CUMULATIVE MEMBERSHIP DATA](#)

TOTAL FAMILY UNIT MEMBERS	3,354
FAMILY MEMBERS PAYING HALF DUES	1,916